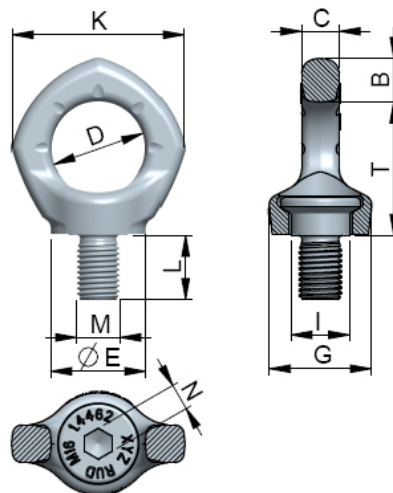


Medidas y datos: Cáncamo giratorio en acero inoxidable INOX-STAR M12

Nº de artículo: Z993835

weight:	0,19 kg	0,42 lbs
Nominal WLL:	500 kg	1100 lbs
B:	14 mm	9/16"
T:	43 mm	1-11/16"
C:	12 mm	15/32"
D:	30 mm	1-3/16"
E:	30 mm	1-3/16"
G:	32 mm	1-1/4"
I:	20 mm	3/4"
K:	56 mm	2-3/16"
L:	18 mm	23/32"
M:	M12	M12
N:	8 mm	5/16"



Max. peso transportable en kg para diferentes tipos de carga

1 Ramal:



1200 kg



500 kg

2 Ramales:

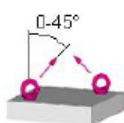


2400 kg



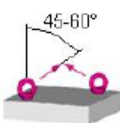
1000 kg

vertical:



700 kg

simétrico:



500 kg

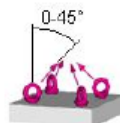
3/4 Ramales:*



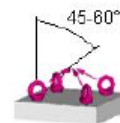
3600 kg



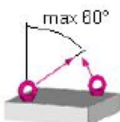
1500 kg



1050 kg

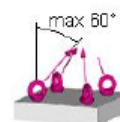


750 kg



500 kg

Asimétrico:



500 kg